



KABLAR  
LIFE PARK  
RESA INVEST

BREZA

SKLAD PRIRODE I KOMFORA



KABLAR  
LIFE PARK  
RESA INVEST

ZEMUNSKA 126, 22303,  
NOVI BANOVCИ,  
SERBIA

informacije i rezervacije:  
066/220-205  
info@resainvest.rs  
www.resainvest.rs





KABLAR  
LIFE PARK  
RESA INVEST

# SKLAD PRIRODE I KOMFORA

 BREZA  BAGREM  HRAST

 JAVOR  BOR  OMORIKA



Breza



KABLAR  
LIFE PARK  
RESA INVEST



Kablar Life Park

## *Sklad prirode i komfora*

Dobro došli u Kablar Life Park, moderan stambeno - poslovni kompleks koji spaja udobnost savremenog života i mirnu atmosferu Novih Banovaca. Na samo 25 minuta od Beograda i svega 15 minuta od Aerodroma Nikola Tesla, ovaj projekat donosi idealnu ravnotežu između urbanog komfora i prirodnog okruženja.



aerodrom  
15 MIN



autoput E75  
7 MIN



Dunav  
2 MIN



Beograd  
25 MIN

Prva faza izgradnje obuhvata:

**266 savremenih stanova raspoređenih u 6 lamela**

10 funkcionalnih poslovnih prostora

Garažni prostor za bezbrižno parkiranje, Park sa sadržajem za decu

Dodatne prateće sadržaje za potpuni komfor





KABLAR  
LIFE PARK  
RESA INVEST



## KO GRADI KABLAR LIFE PARK ?

RESA GRADNJA D.O.O.

Kompanija sa tradicijom dužom od **20 godina**  
i poverenjem stečenim na više stotina  
projekata širom Srbije.

Danas, sa istom posvećenošću, realizujemo  
stambeni kompleks Kablar Life Park –  
moderan prostor za savremen porodični život.

**RESA**  
GRADNJA D.O.O.

**RESA**  
INVEST  
RESA GRADNJA











KABLAR  
LIFE PARK  
RESA INVEST

BREZA



## PRIZEMLJE

STAN BR. I-01	 58.40m <sup>2</sup>
STAN BR. I-02	 54.72m <sup>2</sup>
STAN BR. I-03	 50.01m <sup>2</sup>
STAN BR. I-04	 30.78m <sup>2</sup>
STAN BR. I-05	 56.76m <sup>2</sup>
STAN BR. I-06	 50.45m <sup>2</sup>





KABLAR  
LIFE PARK  
RESA INVEST

LAMELA BREZA - PRIZEMLJE

## STAN BR. I-01 - DVOIPOSOBAN STAN

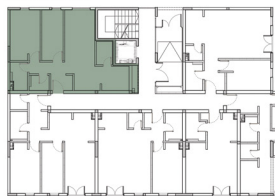
SEVEROZAPAD  $m^2$  58.40m<sup>2</sup>



BR.	NAMENA	NETO
01	Ulaz	2.75 m <sup>2</sup>
02	Kuhinja	5.29 m <sup>2</sup>
03	Dnevna soba sa trpezarijom	18.32 m <sup>2</sup>
04	Spavaća soba	11.64 m <sup>2</sup>
05	Spavaća soba	8.34 m <sup>2</sup>
06	Hodnik	3.18 m <sup>2</sup>
07	Kupatilo	3.58 m <sup>2</sup>
08	Toalet	2.40 m <sup>2</sup>
09	Ostava	2.91 m <sup>2</sup>

UKUPNO STAN br. I - 01 58.40 m<sup>2</sup>

DVORIŠTE



BANATSKA ULICA

NOVA ULICA



I-01



KABLAR  
LIFE PARK  
RESA INVEST

LAMELA BREZA - PRIZEMLJE SA DVORIŠTEM

## STAN BR. I-02 - DVOIPOSOBAN STAN

JUGOISTOK  $m^2$  54.72m<sup>2</sup>



BR.	NAMENA	NETO
01	Ulaz	5.01 m <sup>2</sup>
02	Kuhinja	4.58 m <sup>2</sup>
03	Dnevna soba s trpezarijom	17.31 m <sup>2</sup>
04	Spavaća soba	11.46 m <sup>2</sup>
05	Spavaća soba	8.34 m <sup>2</sup>
06	Hodnik	1.80 m <sup>2</sup>
07	Kupatilo	4.03 m <sup>2</sup>
08	Ostava	2.18 m <sup>2</sup>

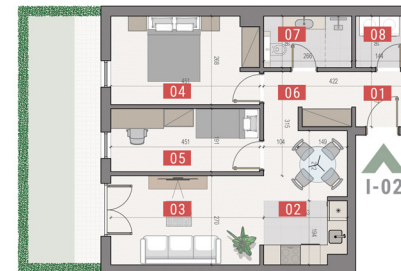
UKUPNO STAN br. I - 02 54.72 m<sup>2</sup>

DVORIŠTE



BANATSKA ULICA

NOVA ULICA



I-02



KABLAR  
LIFE PARK  
RESA INVEST

## LAMELA BREZA - PRIZEMLJE SA DVORIŠTEM STAN BR. I-03 - DVO SOBNI STAN

JUGOISTOK 50.01m<sup>2</sup>



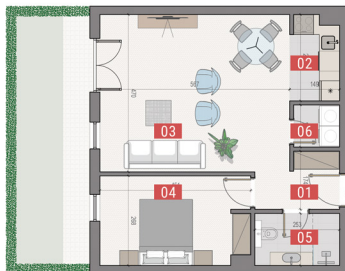
BR.	NAMENA	NETO
01	Ulaz	3.58 m <sup>2</sup>
02	Kuhinja	3.47 m <sup>2</sup>
03	Dnevna soba s trpezarijom	26.00 m <sup>2</sup>
04	Spavaća soba	11.46 m <sup>2</sup>
05	Kupatilo	3.83 m <sup>2</sup>
06	Ostava	1.68 m <sup>2</sup>
<b>UKUPNO STAN br. I - 03</b>		<b>50.01 m<sup>2</sup></b>

DVORIŠTE



BANATSKA ULICA

NOVA ULICA



I-03



KABLAR  
LIFE PARK  
RESA INVEST

## LAMELA BREZA - PRIZEMLJE SA DVORIŠTEM STAN BR. I-04 - GARSONJERA

JUGOISTOK 30.78m<sup>2</sup>



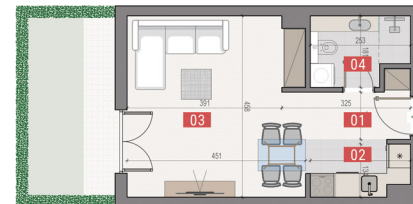
BR.	NAMENA	NETO
01	Ulaz	3.44 m <sup>2</sup>
02	Kuhinja	3.42 m <sup>2</sup>
03	Dnevna soba s trpezarijom	19.92 m <sup>2</sup>
04	Kupatilo	3.99 m <sup>2</sup>
<b>UKUPNO STAN br. I - 04</b>		<b>30.78 m<sup>2</sup></b>

DVORIŠTE



BANATSKA ULICA

NOVA ULICA



I-04



KABLAR  
LIFE PARK  
RESA INVEST

## LAMELA BREZA - PRIZEMLJE SA DVORIŠTEM

### STAN BR. I-05 - TROSOBNI STAN



ISTOK

56.76m<sup>2</sup>

BR.	NAMENA	NETO
01	Ulaz	4.46 m <sup>2</sup>
02	Kuhinja	4.69 m <sup>2</sup>
03	Dnevna soba s trpezarijom	16.09 m <sup>2</sup>
04	Spavaća soba	11.97 m <sup>2</sup>
05	Spavaća soba	8.62 m <sup>2</sup>
06	Hodnik	5.39 m <sup>2</sup>
07	Kupatilo	3.47 m <sup>2</sup>
08	Ostava	2.06 m <sup>2</sup>

**UKUPNO STAN br. I - 05 56.76 m<sup>2</sup>**



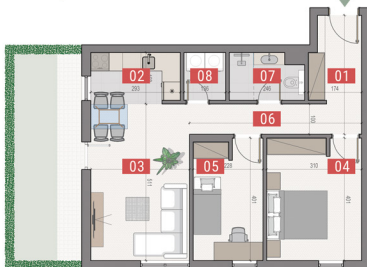
DVORIŠTE



BANATSKA ULICA

NOVA ULICA

I-05



KABLAR  
LIFE PARK  
RESA INVEST

## LAMELA BREZA - PRIZEMLJE SA DVORIŠTEM

### STAN BR. I-06 - DVO SOBNI STAN



ISTOK

50.45m<sup>2</sup>

BR.	NAMENA	NETO
01	Ulaz	4.35 m <sup>2</sup>
02	Kuhinja	4.86 m <sup>2</sup>
03	Dnevna soba s trpezarijom	24.74 m <sup>2</sup>
04	Spavaća soba	10.83 m <sup>2</sup>
05	Kupatilo	3.83 m <sup>2</sup>
06	Ostava	1.85 m <sup>2</sup>

**UKUPNO STAN br. I - 06 50.45 m<sup>2</sup>**



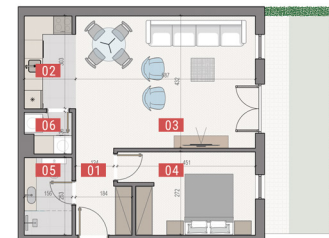
DVORIŠTE



BANATSKA ULICA

NOVA ULICA

I-06















KABLAR  
LIFE PARK  
RESA INVEST

BREZA

## I SPRAT

STAN BR. I-07	 40.94m <sup>2</sup>
STAN BR. I-08	 46.58m <sup>2</sup>
STAN BR. I-09	 48.07m <sup>2</sup>
STAN BR. I-10	 70.32m <sup>2</sup>
STAN BR. I-11	 34.07m <sup>2</sup>
STAN BR. I-12	 49.33m <sup>2</sup>
STAN BR. I-13	 56.24m <sup>2</sup>
STAN BR. I-14	 54.30m <sup>2</sup>
STAN BR. I-15	 60.02m <sup>2</sup>
STAN BR. I-16	 61.55m <sup>2</sup>



KABLAR  
LIFE PARK  
RESA INVEST

## LAMELA BREZA - I SPRAT

### STAN BR. I-07 - DVOSOBNI STAN



ZAPAD

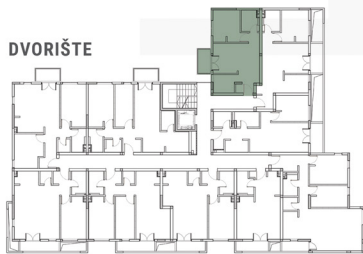
40.94m<sup>2</sup>

BR.	NAMENA	NETO
01	Ulaz	1.07 m <sup>2</sup>
02	Kuhinja	4.45 m <sup>2</sup>
03	Dnevna soba s trpezarijom	17.10 m <sup>2</sup>
04	Spavaća soba	9.99 m <sup>2</sup>
05	Hodnik	1.24 m <sup>2</sup>
06	Kupatilo	3.95 m <sup>2</sup>
07	Terasa	3.14 m <sup>2</sup>

**UKUPNO STAN br. I - 07 40.94 m<sup>2</sup>**



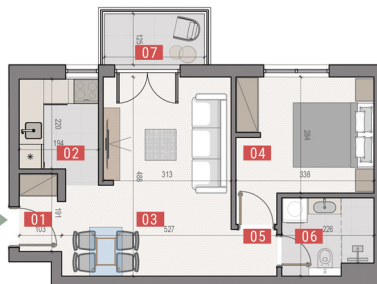
DVORIŠTE



BANATSKA ULICA

NOVA ULICA

I-07



KABLAR  
LIFE PARK  
RESA INVEST

## LAMELA BREZA - I SPRAT

### STAN BR. I-08 - DVOSOBNI STAN



ISTOK

46.58m<sup>2</sup>

BR.	NAMENA	NETO
01	Ulaz	4.22 m <sup>2</sup>
02	Kuhinja	4.76 m <sup>2</sup>
03	Dnevna soba s trpezarijom	18.63 m <sup>2</sup>
04	Spavaća soba	9.99 m <sup>2</sup>
05	Hodnik	1.24 m <sup>2</sup>
06	Kupatilo	3.95 m <sup>2</sup>
07	Terasa	3.78 m <sup>2</sup>

**UKUPNO STAN br. I - 08 46.58 m<sup>2</sup>**



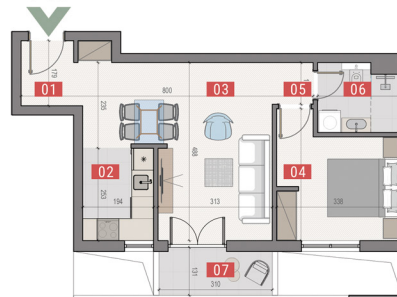
DVORIŠTE



BANATSKA ULICA

NOVA ULICA

I-08





KABLAR  
LIFE PARK  
RESA INVEST

## LAMELA BREZA - I SPRAT

### STAN BR. I-09 - DVOSOBNI STAN



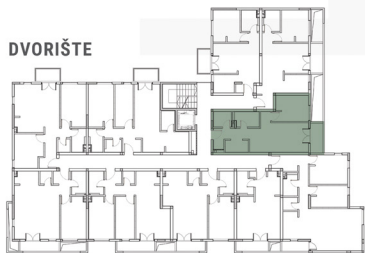
**48.07m<sup>2</sup>**

BR.	NAMENA	NETO
01	Ulaz	2.34 m <sup>2</sup>
02	Kuhinja	3.15 m <sup>2</sup>
03	Dnevna soba s trpezarijom	18.19 m <sup>2</sup>
04	Spavaća soba	9.47 m <sup>2</sup>
05	Hodnik	2.97 m <sup>2</sup>
06	Hodnik	1.17 m <sup>2</sup>
07	Kupatilo	4.16 m <sup>2</sup>
08	Ostava	2.96 m <sup>2</sup>
09	Terasa	3.67 m <sup>2</sup>

**UKUPNO STAN br. I - 09 48.07 m<sup>2</sup>**

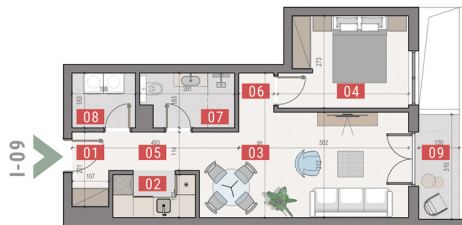


DVORIŠTE



BANATSKA ULICA

NOVA ULICA



KABLAR  
LIFE PARK  
RESA INVEST

## LAMELA BREZA - I SPRAT

### STAN BR. I-10 - TROSOBNI STAN



**70.32m<sup>2</sup>**

BR.	NAMENA	NETO
01	Ulaz	4.46 m <sup>2</sup>
02	Kuhinja	4.69 m <sup>2</sup>
03	Dnevna soba s trpezarijom	27.04 m <sup>2</sup>
04	Spavaća soba	11.97 m <sup>2</sup>
05	Spavaća soba	8.62 m <sup>2</sup>
06	Hodnik	5.39 m <sup>2</sup>
07	Kupatilo	3.47 m <sup>2</sup>
08	Ostava	2.06 m <sup>2</sup>
09	Terasa	2.60 m <sup>2</sup>

**UKUPNO STAN br. I - 10 70.32 m<sup>2</sup>**



DVORIŠTE



BANATSKA ULICA

NOVA ULICA





KABLAR  
LIFE PARK  
RESA INVEST

## LAMELA BREZA - I SPRAT

### STAN BR. I-11 - GARSONJERA

JUGOISTOK **34.07m<sup>2</sup>**

BR.	NAMENA	NETO
01	Ulaz	3.44 m <sup>2</sup>
02	Kuhinja	3.42 m <sup>2</sup>
03	Dnevna soba s trpezarijom	19.92 m <sup>2</sup>
04	Kupatilo	3.99 m <sup>2</sup>
05	Terasa	3.30 m <sup>2</sup>

**UKUPNO STAN br. I - 11 34.07 m<sup>2</sup>**



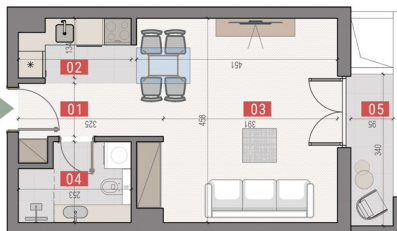
DVORIŠTE



BANATSKA ULICA

NOVA ULICA

I-11



KABLAR  
LIFE PARK  
RESA INVEST

## LAMELA BREZA - I SPRAT

### STAN BR. I-12 - DVOSOBNI STAN

JUGOISTOK **49.33m<sup>2</sup>**

BR.	NAMENA	NETO
01	Ulaz	3.60 m <sup>2</sup>
02	Kuhinja	3.47 m <sup>2</sup>
03	Dnevna soba s trpezarijom	22.34 m <sup>2</sup>
04	Spavaća soba	11.46 m <sup>2</sup>
05	Kupatilo	3.83 m <sup>2</sup>
06	Ostava	1.68 m <sup>2</sup>
07	Terasa	2.96 m <sup>2</sup>

**UKUPNO STAN br. I - 12 49.33 m<sup>2</sup>**



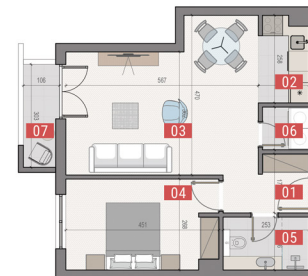
DVORIŠTE



BANATSKA ULICA

NOVA ULICA

I-12





KABLAR  
LIFE PARK  
RESA INVEST

## LAMELA BREZA - I SPRAT

### STAN BR. I-13 - DVOIPOSOBAN STAN

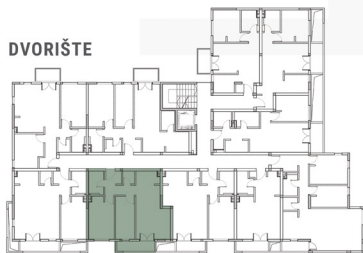
JUGOISTOK **56.24m<sup>2</sup>**



BR.	NAMENA	NETO
01	Ulaz	3.62 m <sup>2</sup>
02	Kuhinja	3.42 m <sup>2</sup>
03	Dnevna soba s trpezarijom	17.53 m <sup>2</sup>
04	Spavaća soba	11.46 m <sup>2</sup>
05	Spavaća soba	8.79 m <sup>2</sup>
06	Hodnik	2.11 m <sup>2</sup>
07	Kupatilo	3.83 m <sup>2</sup>
08	Ostava	1.68 m <sup>2</sup>
09	Terasa	3.80 m <sup>2</sup>

**UKUPNO STAN br. I - 13 56.24 m<sup>2</sup>**

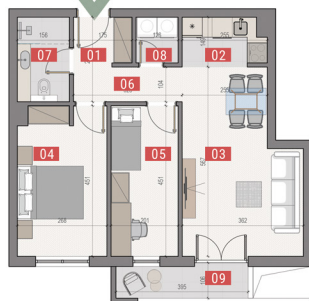
DVORIŠTE



BANATSKA ULICA

NOVA ULICA

I-13



KABLAR  
LIFE PARK  
RESA INVEST

## LAMELA BREZA - I SPRAT

### STAN BR. I-14 - DVOSOBNI STAN

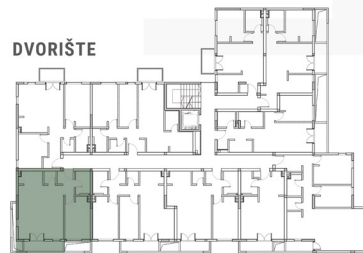
JUGOISTOK **54.30m<sup>2</sup>**



BR.	NAMENA	NETO
01	Ulaz	3.65 m <sup>2</sup>
02	Kuhinja	3.47 m <sup>2</sup>
03	Dnevna soba s trpezarijom	26.27 m <sup>2</sup>
04	Spavaća soba	11.46 m <sup>2</sup>
05	Kupatilo	3.83 m <sup>2</sup>
06	Ostava	1.68 m <sup>2</sup>
07	Terasa	3.95 m <sup>2</sup>

**UKUPNO STAN br. I - 14 54.30 m<sup>2</sup>**

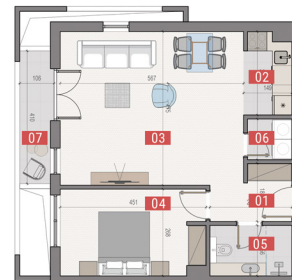
DVORIŠTE



BANATSKA ULICA

NOVA ULICA

I-14





KABLAR  
LIFE PARK  
RESA INVEST

## LAMELA BREZA - I SPRAT

### STAN BR. I-15 - TROSOBNI STAN

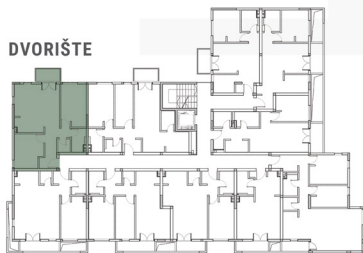
SEVEROZAPAD  $60.02m^2$



BR.	NAMENA	NETO
01	Ulaz	2.97 m <sup>2</sup>
02	Kuhinja	4.61 m <sup>2</sup>
03	Dnevna soba s trpezarijom	17.82 m <sup>2</sup>
04	Spavaća soba	11.64 m <sup>2</sup>
05	Spavaća soba	10.15 m <sup>2</sup>
06	Hodnik	4.33 m <sup>2</sup>
07	Kupatilo	3.58 m <sup>2</sup>
08	Ostava	1.79 m <sup>2</sup>
09	Terasa	3.14 m <sup>2</sup>

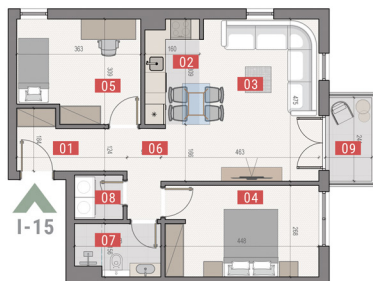
UKUPNO STAN br. I - 15 **60.02 m<sup>2</sup>**

DVORIŠTE



BANATSKA ULICA

NOVA ULICA



I-15



KABLAR  
LIFE PARK  
RESA INVEST

## LAMELA BREZA - I SPRAT

### STAN BR. I-16 - TROSOBNI STAN

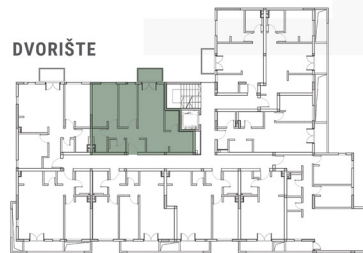
SEVEROZAPAD  $61.55m^2$



BR.	NAMENA	NETO
01	Ulaz	2.75 m <sup>2</sup>
02	Kuhinja	5.29 m <sup>2</sup>
03	Dnevna soba s trpezarijom	18.32 m <sup>2</sup>
04	Spavaća soba	11.64 m <sup>2</sup>
05	Spavaća soba	8.34 m <sup>2</sup>
06	Hodnik	3.18 m <sup>2</sup>
07	Kupatilo	3.58 m <sup>2</sup>
08	Toalet	2.40 m <sup>2</sup>
09	Ostava	2.91 m <sup>2</sup>
10	Terasa	3.14 m <sup>2</sup>

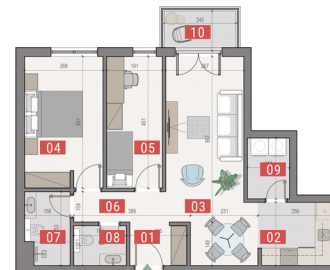
UKUPNO STAN br. I - 16 **61.55 m<sup>2</sup>**

DVORIŠTE



BANATSKA ULICA

NOVA ULICA



I-16













KABLAR  
LIFE PARK  
RESA INVEST

BREZA



## II SPRAT

STAN BR. I-17	 40.94m <sup>2</sup>
STAN BR. I-18	 46.58m <sup>2</sup>
STAN BR. I-19	 48.07m <sup>2</sup>
STAN BR. I-20	 70.32m <sup>2</sup>
STAN BR. I-21	 34.07m <sup>2</sup>
STAN BR. I-22	 49.33m <sup>2</sup>
STAN BR. I-23	 56.24m <sup>2</sup>
STAN BR. I-24	 54.30m <sup>2</sup>
STAN BR. I-25	 60.02m <sup>2</sup>
STAN BR. I-26	 61.55m <sup>2</sup>



KABLAR  
LIFE PARK  
RESA INVEST

## LAMELA BREZA - II SPRAT

### STAN BR. I-17 - DVOSOBNI STAN



ZAPAD

40.94m<sup>2</sup>

BR.	NAMENA	NETO
01	Ulaz	1.07 m <sup>2</sup>
02	Kuhinja	4.45 m <sup>2</sup>
03	Dnevna soba s trpezarijom	17.10 m <sup>2</sup>
04	Spavaća soba	9.99 m <sup>2</sup>
05	Hodnik	1.24 m <sup>2</sup>
06	Kupatilo	3.95 m <sup>2</sup>
07	Terasa	3.14 m <sup>2</sup>

**UKUPNO STAN br. I - 17** 40.94 m<sup>2</sup>



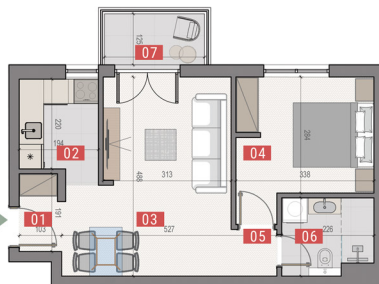
DVORIŠTE



BANATSKA ULICA

NOVA ULICA

I-17



KABLAR  
LIFE PARK  
RESA INVEST

## LAMELA BREZA - II SPRAT

### STAN BR. I-18 - DVOSOBNI STAN



ISTOK

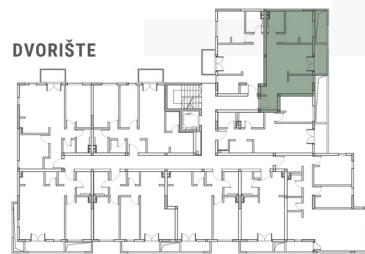
46.58m<sup>2</sup>

BR.	NAMENA	NETO
01	Ulaz	4.22 m <sup>2</sup>
02	Kuhinja	4.76 m <sup>2</sup>
03	Dnevna soba s trpezarijom	18.63 m <sup>2</sup>
04	Spavaća soba	9.99 m <sup>2</sup>
05	Hodnik	1.24 m <sup>2</sup>
06	Kupatilo	3.95 m <sup>2</sup>
07	Terasa	3.78 m <sup>2</sup>

**UKUPNO STAN br. I - 18** 46.58 m<sup>2</sup>



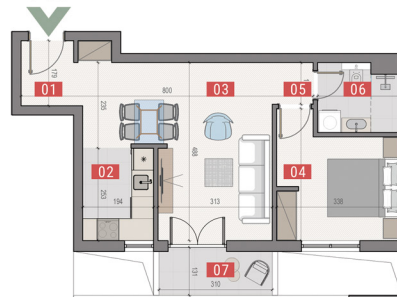
DVORIŠTE



BANATSKA ULICA

NOVA ULICA

I-18





KABLAR  
LIFE PARK  
RESA INVEST

## LAMELA BREZA - II SPRAT

### STAN BR. I-19 - DVOSOBNI STAN



**48.07m<sup>2</sup>**

BR.	NAMENA	NETO
01	Ulaz	2.34 m <sup>2</sup>
02	Kuhinja	3.15 m <sup>2</sup>
03	Dnevna soba s trpezarijom	18.19 m <sup>2</sup>
04	Spavaća soba	9.47 m <sup>2</sup>
05	Hodnik	2.97 m <sup>2</sup>
06	Hodnik	1.17 m <sup>2</sup>
07	Kupatilo	4.16 m <sup>2</sup>
08	Ostava	2.96 m <sup>2</sup>
09	Terasa	3.67 m <sup>2</sup>

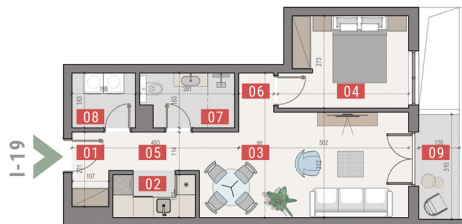
**UKUPNO STAN br. I - 19 48.07 m<sup>2</sup>**

DVORIŠTE



BANATSKA ULICA

NOVA ULICA



KABLAR  
LIFE PARK  
RESA INVEST

## LAMELA BREZA - II SPRAT

### STAN BR. I-20 - TROSOBNI STAN

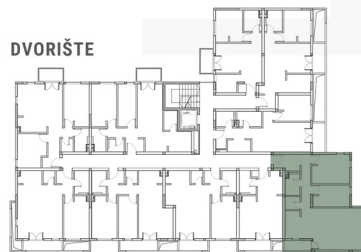


**70.32m<sup>2</sup>**

BR.	NAMENA	NETO
01	Ulaz	4.46 m <sup>2</sup>
02	Kuhinja	4.69 m <sup>2</sup>
03	Dnevna soba s trpezarijom	27.04 m <sup>2</sup>
04	Spavaća soba	11.97 m <sup>2</sup>
05	Spavaća soba	8.62 m <sup>2</sup>
06	Hodnik	5.39 m <sup>2</sup>
07	Kupatilo	3.47 m <sup>2</sup>
08	Ostava	2.06 m <sup>2</sup>
09	Terasa	2.60 m <sup>2</sup>

**UKUPNO STAN br. I - 20 70.32 m<sup>2</sup>**

DVORIŠTE



BANATSKA ULICA

NOVA ULICA





KABLAR  
LIFE PARK  
RESA INVEST

## LAMELA BREZA - II SPRAT

### STAN BR. I-21 - GARSONJERA

JUGOISTOK **34.07m<sup>2</sup>**

BR.	NAMENA	NETO
01	Ulaz	3.44 m <sup>2</sup>
02	Kuhinja	3.42 m <sup>2</sup>
03	Dnevna soba s trpezarijom	19.92 m <sup>2</sup>
04	Kupatilo	3.99 m <sup>2</sup>
05	Terasa	3.30 m <sup>2</sup>

**UKUPNO STAN br. I - 21 34.07 m<sup>2</sup>**

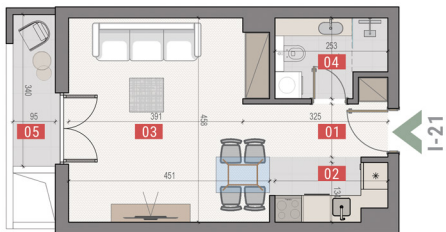


DVORIŠTE



BANATSKA ULICA

NOVA ULICA



I-21



KABLAR  
LIFE PARK  
RESA INVEST

## LAMELA BREZA - II SPRAT

### STAN BR. I-22 - DVOSOBNI STAN

JUGOISTOK **49.33m<sup>2</sup>**

BR.	NAMENA	NETO
01	Ulaz	3.60 m <sup>2</sup>
02	Kuhinja	3.47 m <sup>2</sup>
03	Dnevna soba s trpezarijom	22.34 m <sup>2</sup>
04	Spavaća soba	11.46 m <sup>2</sup>
05	Kupatilo	3.83 m <sup>2</sup>
06	Ostava	1.68 m <sup>2</sup>
07	Terasa	2.96 m <sup>2</sup>

**UKUPNO STAN br. I - 22 49.33 m<sup>2</sup>**

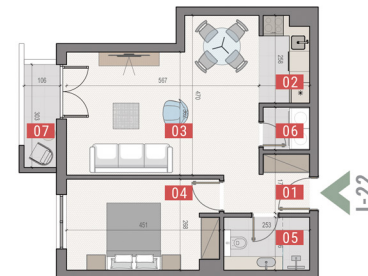


DVORIŠTE



BANATSKA ULICA

NOVA ULICA



I-22



KABLAR  
LIFE PARK  
RESA INVEST

## LAMELA BREZA - II SPRAT

### STAN BR. I-23 - DVOIPOSOBAN STAN

JUGOISTOK **56.24m<sup>2</sup>**



BR.	NAMENA	NETO
01	Ulaz	3.62 m <sup>2</sup>
02	Kuhinja	3.42 m <sup>2</sup>
03	Dnevna soba s trpezarijom	17.53 m <sup>2</sup>
04	Spavaća soba	11.46 m <sup>2</sup>
05	Spavaća soba	8.79 m <sup>2</sup>
06	Hodnik	2.11 m <sup>2</sup>
07	Kupatilo	3.83 m <sup>2</sup>
08	Ostava	1.68 m <sup>2</sup>
09	Terasa	3.80 m <sup>2</sup>

**UKUPNO STAN br. I - 23** **56.24 m<sup>2</sup>**

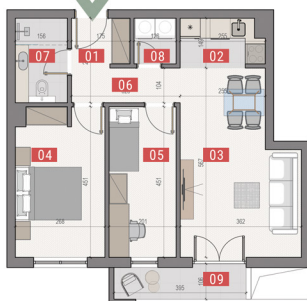
DVORIŠTE



BANATSKA ULICA

NOVA ULICA

I-23



KABLAR  
LIFE PARK  
RESA INVEST

## LAMELA BREZA - II SPRAT

### STAN BR. I-24 - DVOSOBAN

JUGOISTOK **54.30m<sup>2</sup>**



BR.	NAMENA	NETO
01	Ulaz	3.65 m <sup>2</sup>
02	Kuhinja	3.47 m <sup>2</sup>
03	Dnevna soba s trpezarijom	26.27 m <sup>2</sup>
04	Spavaća soba	11.46 m <sup>2</sup>
05	Kupatilo	3.83 m <sup>2</sup>
06	Ostava	1.68 m <sup>2</sup>
07	Terasa	3.95 m <sup>2</sup>

**UKUPNO STAN br. I - 24** **54.30 m<sup>2</sup>**

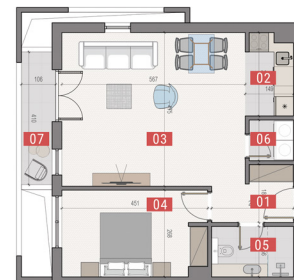
DVORIŠTE



BANATSKA ULICA

NOVA ULICA

I-24





KABLAR  
LIFE PARK  
RESA INVEST

## LAMELA BREZA - II SPRAT

### STAN BR. I-25 - TROSOBNI STAN

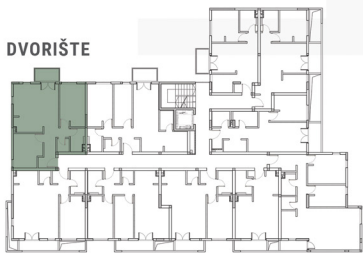
SEVEROZAPAD  $60.02m^2$



BR.	NAMENA	NETO
01	Ulaz	2.97 m <sup>2</sup>
02	Kuhinja	4.61 m <sup>2</sup>
03	Dnevna soba s trpezarijom	17.82 m <sup>2</sup>
04	Spavaća soba	11.64 m <sup>2</sup>
05	Spavaća soba	10.15 m <sup>2</sup>
06	Hodnik	4.33 m <sup>2</sup>
07	Kupatilo	3.58 m <sup>2</sup>
08	Ostava	1.79 m <sup>2</sup>
09	Terasa	3.14 m <sup>2</sup>

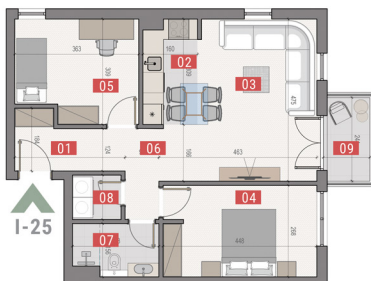
UKUPNO STAN br. I - 25 **60.02 m<sup>2</sup>**

DVORIŠTE



BANATSKA ULICA

NOVA ULICA



I-25



KABLAR  
LIFE PARK  
RESA INVEST

## LAMELA BREZA - II SPRAT

### STAN BR. I-26 - TROSOBNI

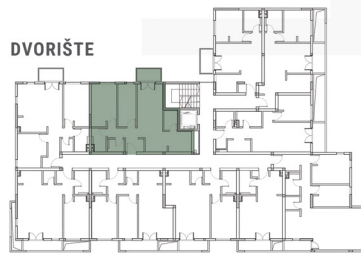
SEVEROZAPAD  $61.55m^2$



BR.	NAMENA	NETO
01	Ulaz	2.75 m <sup>2</sup>
02	Kuhinja	5.29 m <sup>2</sup>
03	Dnevna soba s trpezarijom	18.32 m <sup>2</sup>
04	Spavaća soba	11.64 m <sup>2</sup>
05	Spavaća soba	8.34 m <sup>2</sup>
06	Hodnik	3.18 m <sup>2</sup>
07	Kupatilo	3.58 m <sup>2</sup>
08	Toalet	2.40 m <sup>2</sup>
09	Ostava	2.91 m <sup>2</sup>
10	Terasa	3.14 m <sup>2</sup>

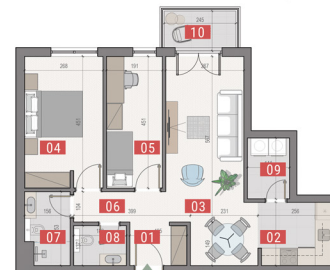
UKUPNO STAN br. I - 26 **61.55 m<sup>2</sup>**

DVORIŠTE



BANATSKA ULICA

NOVA ULICA



I-26












KABLAR  
LIFE PARK  
RESA INVEST

BREZA



## III SPRAT

STAN BR. I-27	 95.85m <sup>2</sup>
STAN BR. I-28	 48.07m <sup>2</sup>
STAN BR. I-29	 70.32m <sup>2</sup>
STAN BR. I-30	 34.08m <sup>2</sup>
STAN BR. I-31	 49.33m <sup>2</sup>
STAN BR. I-32	 56.24m <sup>2</sup>
STAN BR. I-33	 54.30m <sup>2</sup>
STAN BR. I-34	 60.02m <sup>2</sup>
STAN BR. I-35	 61.55m <sup>2</sup>



KABLAR  
LIFE PARK  
RESA INVEST

## LAMELA BREZA - III SPRAT

### STAN BR. I-27 - ČETVOROSOBNI



95.85m<sup>2</sup>



BR.	NAMENA	NETO
01	Ulaz	4.00 m <sup>2</sup>
02	Kuhinja	5.34 m <sup>2</sup>
03	Dnevna soba s trpezarijom	31.30 m <sup>2</sup>
04	Spavaća soba	11.35 m <sup>2</sup>
05	Spavaća soba	9.40 m <sup>2</sup>
06	Spavaća soba	10.27 m <sup>2</sup>
07	Hodnik	4.37 m <sup>2</sup>
08	Hodnik	1.31 m <sup>2</sup>
09	Kupatilo	3.71 m <sup>2</sup>
10	Kupatilo	4.35 m <sup>2</sup>
11	Ostava	2.22 m <sup>2</sup>
12	Ostava	1.46 m <sup>2</sup>
13	Terasa	3.71 m <sup>2</sup>
14	Terasa	3.07 m <sup>2</sup>

UKUPNO STAN br. I - 27 95.85 m<sup>2</sup>

DVORIŠTE



BANATSKA ULICA

NOVA ULICA



I-27



KABLAR  
LIFE PARK  
RESA INVEST

## LAMELA BREZA - III SPRAT

### STAN BR. I-28 - DVOSOBNI STAN



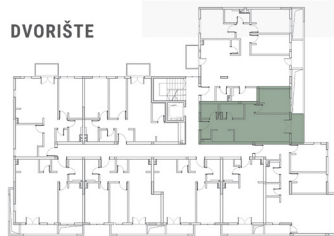
48.07m<sup>2</sup>



BR.	NAMENA	NETO
01	Ulaz	2.34 m <sup>2</sup>
02	Kuhinja	3.15 m <sup>2</sup>
03	Dnevna soba s trpezarijom	18.19 m <sup>2</sup>
04	Spavaća soba	9.47 m <sup>2</sup>
05	Hodnik	2.97 m <sup>2</sup>
06	Hodnik	1.17 m <sup>2</sup>
07	Kupatilo	4.16 m <sup>2</sup>
08	Ostava	2.96 m <sup>2</sup>
09	Terasa	3.67 m <sup>2</sup>

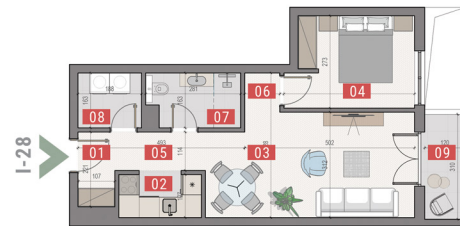
UKUPNO STAN br. I - 28 48.07 m<sup>2</sup>

DVORIŠTE



BANATSKA ULICA

NOVA ULICA



I-28



KABLAR  
LIFE PARK  
RESA INVEST

## LAMELA BREZA - III SPRAT

### STAN BR. I-29 - TROSOBNI STAN

JUGOISTOK **70.32m<sup>2</sup>**



BR.	NAMENA	NETO
01	Ulaz	4.46 m <sup>2</sup>
02	Kuhinja	4.69 m <sup>2</sup>
03	Dnevna soba s trpezarijom	27.04 m <sup>2</sup>
04	Spavaća soba	11.97 m <sup>2</sup>
05	Spavaća soba	8.62 m <sup>2</sup>
06	Hodnik	5.39 m <sup>2</sup>
07	Kupatilo	3.47 m <sup>2</sup>
08	Ostava	2.06 m <sup>2</sup>
09	Terasa	2.60 m <sup>2</sup>

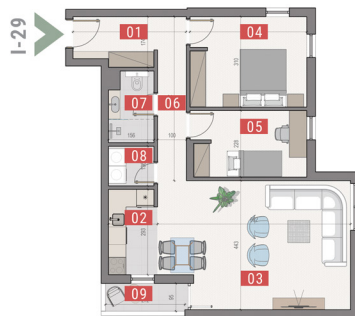
**UKUPNO STAN br. I - 29** **70.32 m<sup>2</sup>**

DVORIŠTE



BANATSKA ULICA

NOVA ULICA



KABLAR  
LIFE PARK  
RESA INVEST

## LAMELA BREZA - III SPRAT

### STAN BR. I-30 - GARSONJERA

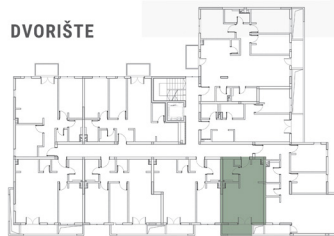
JUGOISTOK **34.07m<sup>2</sup>**



BR.	NAMENA	NETO
01	Ulaz	3.44 m <sup>2</sup>
02	Kuhinja	3.42 m <sup>2</sup>
03	Dnevna soba s trpezarijom	19.92 m <sup>2</sup>
04	Kupatilo	3.99 m <sup>2</sup>
05	Terasa	3.30 m <sup>2</sup>

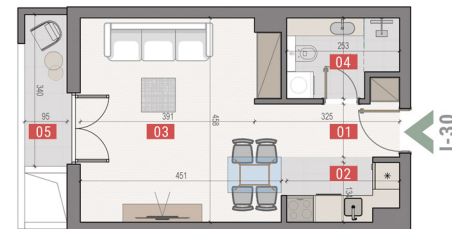
**UKUPNO STAN br. I - 30** **34.07 m<sup>2</sup>**

DVORIŠTE



BANATSKA ULICA

NOVA ULICA





KABLAR  
LIFE PARK  
RESA INVEST

## LAMELA BREZA - III SPRAT

### STAN BR. I-31 - DVOSOBNI STAN

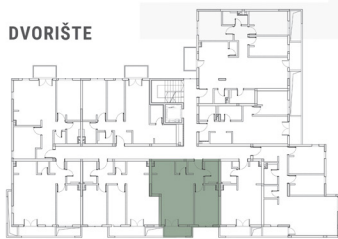
JUGOISTOK 49.33m<sup>2</sup>

BR.	NAMENA	NETO
01	Ulaz	3.60 m <sup>2</sup>
02	Kuhinja	3.47 m <sup>2</sup>
03	Dnevna soba s trpezarijom	22.34 m <sup>2</sup>
04	Spavaća soba	11.46 m <sup>2</sup>
05	Kupatilo	3.83 m <sup>2</sup>
06	Ostava	1.68 m <sup>2</sup>
07	Terasa	2.96 m <sup>2</sup>

**UKUPNO STAN br. I - 31** 49.33 m<sup>2</sup>

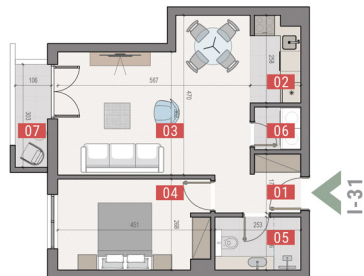


DVORIŠTE



BANATSKA ULICA

NOVA ULICA



KABLAR  
LIFE PARK  
RESA INVEST

## LAMELA BREZA - III SPRAT

### STAN BR. I-32 - DVOIPOSOBAN

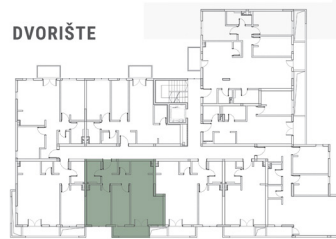
JUGOISTOK 56.24m<sup>2</sup>

BR.	NAMENA	NETO
01	Ulaz	3.62 m <sup>2</sup>
02	Kuhinja	3.42 m <sup>2</sup>
03	Dnevna soba s trpezarijom	17.53 m <sup>2</sup>
04	Spavaća soba	11.46 m <sup>2</sup>
05	Spavaća soba	8.79 m <sup>2</sup>
06	Hodnik	2.11 m <sup>2</sup>
07	Kupatilo	3.83 m <sup>2</sup>
08	Ostava	1.68 m <sup>2</sup>
09	Terasa	3.80 m <sup>2</sup>

**UKUPNO STAN br. I - 32** 56.24 m<sup>2</sup>

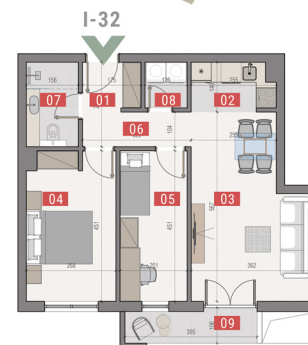


DVORIŠTE



BANATSKA ULICA

NOVA ULICA





KABLAR  
LIFE PARK  
RESA INVEST

## LAMELA BREZA - III SPRAT

### STAN BR. I-33 - DVOSOBNI STAN

JUGOISTOK 54.30m<sup>2</sup>



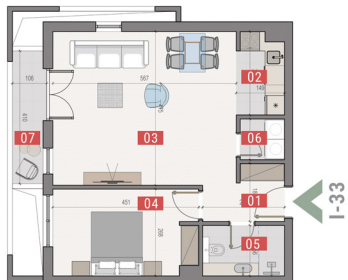
BR.	NAMENA	NETO
01	Ulaz	3.65 m <sup>2</sup>
02	Kuhinja	3.47 m <sup>2</sup>
03	Dnevna soba s trpezarijom	26.27 m <sup>2</sup>
04	Spavaća soba	11.46 m <sup>2</sup>
05	Kupatilo	3.83 m <sup>2</sup>
06	Ostava	1.68 m <sup>2</sup>
07	Terasa	3.95 m <sup>2</sup>
<b>UKUPNO STAN br. I - 33</b>		<b>54.30 m<sup>2</sup></b>

DVORIŠTE



BANATSKA ULICA

NOVA ULICA



I-33



KABLAR  
LIFE PARK  
RESA INVEST

## LAMELA BREZA - III SPRAT

### STAN BR. I-34 - TROSOBNI STAN

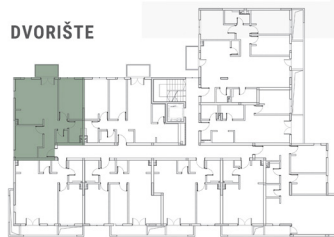
SEVEROZAPAD 60.02m<sup>2</sup>



BR.	NAMENA	NETO
01	Ulaz	2.97 m <sup>2</sup>
02	Kuhinja	4.61 m <sup>2</sup>
03	Dnevna soba s trpezarijom	17.82 m <sup>2</sup>
04	Spavaća soba	11.64 m <sup>2</sup>
05	Spavaća soba	10.15 m <sup>2</sup>
06	Hodnik	4.33 m <sup>2</sup>
07	Kupatilo	3.58 m <sup>2</sup>
08	Ostava	1.79 m <sup>2</sup>
09	Terasa	3.14 m <sup>2</sup>

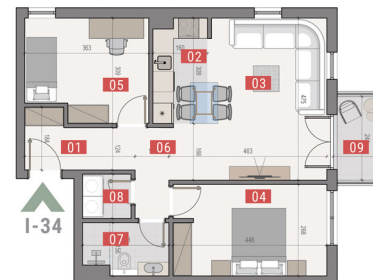
**UKUPNO STAN br. I - 34 60.02 m<sup>2</sup>**

DVORIŠTE



BANATSKA ULICA

NOVA ULICA



I-34



KABLAR  
LIFE PARK  
RESA INVEST

## LAMELA BREZA - III SPRAT

### STAN BR. I-35 - TROSOBNI STAN

SEVEROZAPAD 61.55m<sup>2</sup>

BR.	NAMENA	NETO
01	Ulaz	2.75 m <sup>2</sup>
02	Kuhinja	5.29 m <sup>2</sup>
03	Dnevna soba s trpezarijom	18.32 m <sup>2</sup>
04	Spavaća soba	11.64 m <sup>2</sup>
05	Spavaća soba	8.34 m <sup>2</sup>
06	Hodnik	3.18 m <sup>2</sup>
07	Kupatilo	3.58 m <sup>2</sup>
08	Toalet	2.40 m <sup>2</sup>
09	Ostava	2.91 m <sup>2</sup>
10	Terasa	3.14 m <sup>2</sup>

UKUPNO STAN br. I - 35 **61.55 m<sup>2</sup>**

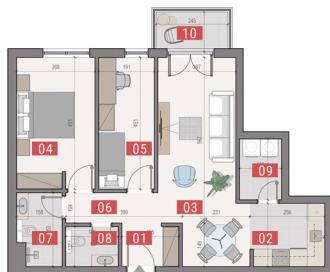


#### DVORIŠTE



BANATSKA ULICA

NOVA ULICA



I-35





KABLAR  
LIFE PARK  
RESA INVEST

## LAMELA BREZA - IV SPRAT

### STAN BR. I-36 - ČETVOROSOBNI STAN

ISTOK-ZAPAD 95.85m<sup>2</sup>



BR.	NAMENA	NETO
01	Ulaz	4.00 m <sup>2</sup>
02	Kuhinja	5.34 m <sup>2</sup>
03	Dnevna soba s trpezarijom	31.30 m <sup>2</sup>
04	Spavaća soba	11.35 m <sup>2</sup>
05	Spavaća soba	9.40 m <sup>2</sup>
06	Spavaća soba	10.27 m <sup>2</sup>
07	Hodnik	4.37 m <sup>2</sup>
08	Hodnik	1.31 m <sup>2</sup>
09	Kupatilo	3.71 m <sup>2</sup>
10	Kupatilo	4.35 m <sup>2</sup>
11	Ostava	2.22 m <sup>2</sup>
12	Ostava	1.46 m <sup>2</sup>
13	Terasa	3.71 m <sup>2</sup>
14	Terasa	3.07 m <sup>2</sup>

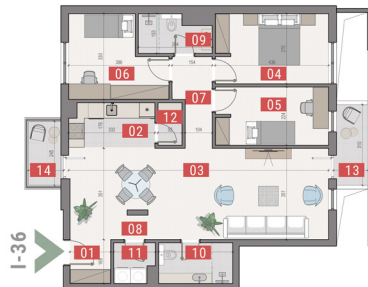
UKUPNO STAN br. I - 36 95.85 m<sup>2</sup>

DVORIŠTE



BANATSKA ULICA

NOVA ULICA



I-36



KABLAR  
LIFE PARK  
RESA INVEST

## LAMELA BREZA - IV SPRAT

### STAN BR. I-37 - DVOSOBNI STAN

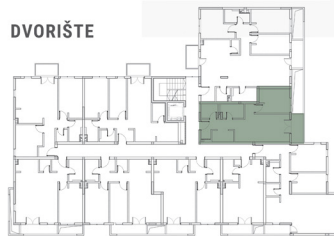
ISTOK 48.07m<sup>2</sup>



BR.	NAMENA	NETO
01	Ulaz	2.34 m <sup>2</sup>
02	Kuhinja	3.15 m <sup>2</sup>
03	Dnevna soba s trpezarijom	18.19 m <sup>2</sup>
04	Spavaća soba	9.47 m <sup>2</sup>
05	Hodnik	2.97 m <sup>2</sup>
06	Hodnik	1.17 m <sup>2</sup>
07	Kupatilo	4.16 m <sup>2</sup>
08	Ostava	2.96 m <sup>2</sup>
09	Terasa	3.67 m <sup>2</sup>

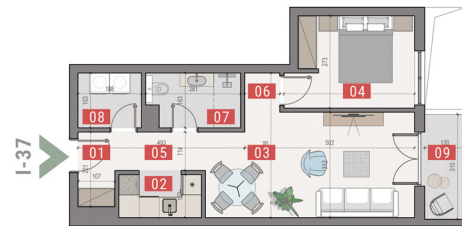
UKUPNO STAN br. I - 37 48.07 m<sup>2</sup>

DVORIŠTE



BANATSKA ULICA

NOVA ULICA



I-37



KABLAR  
LIFE PARK  
RESA INVEST

## LAMELA BREZA - IV SPRAT

### STAN BR. I-38 - TROSOBNI STAN

JUGOISTOK **70.32m<sup>2</sup>**

BR.	NAMENA	NETO
01	Ulaz	4.46 m <sup>2</sup>
02	Kuhinja	4.69 m <sup>2</sup>
03	Dnevna soba s trpezarijom	27.04 m <sup>2</sup>
04	Spavaća soba	11.97 m <sup>2</sup>
05	Spavaća soba	8.62 m <sup>2</sup>
06	Hodnik	5.39 m <sup>2</sup>
07	Kupatilo	3.47 m <sup>2</sup>
08	Ostava	2.06 m <sup>2</sup>
09	Terasa	2.60 m <sup>2</sup>

**UKUPNO STAN br. I - 38** **70.32 m<sup>2</sup>**



DVORIŠTE



BANATSKA ULICA

NOVA ULICA



KABLAR  
LIFE PARK  
RESA INVEST

## LAMELA BREZA - IV SPRAT

### STAN BR. I-39 - GARSONJERA

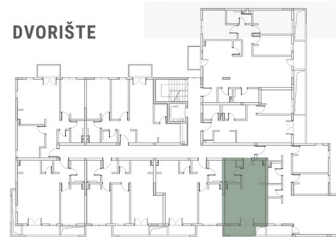
JUGOISTOK **34.07m<sup>2</sup>**

BR.	NAMENA	NETO
01	Ulaz	3.44 m <sup>2</sup>
02	Kuhinja	3.42 m <sup>2</sup>
03	Dnevna soba s trpezarijom	19.92 m <sup>2</sup>
04	Kupatilo	3.99 m <sup>2</sup>
05	Terasa	3.30 m <sup>2</sup>

**UKUPNO STAN br. I - 39** **34.07 m<sup>2</sup>**

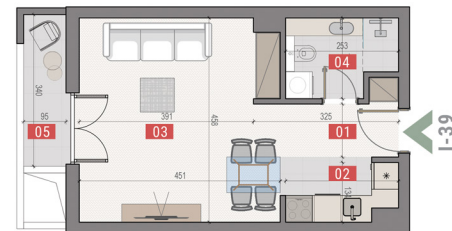


DVORIŠTE



BANATSKA ULICA

NOVA ULICA





KABLAR  
LIFE PARK  
RESA INVEST

## LAMELA BREZA - IV SPRAT

### STAN BR. I-40 - DVOSOBNI STAN

JUGOISTOK **49.33m<sup>2</sup>**

BR.	NAMENA	NETO
01	Ulaz	3.60 m <sup>2</sup>
02	Kuhinja	3.47 m <sup>2</sup>
03	Dnevna soba s trpezarijom	22.34 m <sup>2</sup>
04	Spavaća soba	11.46 m <sup>2</sup>
05	Kupatilo	3.83 m <sup>2</sup>
06	Ostava	1.68 m <sup>2</sup>
07	Terasa	2.96 m <sup>2</sup>

**UKUPNO STAN br. I - 40** **49.33 m<sup>2</sup>**

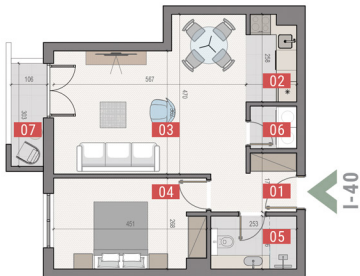


DVORIŠTE



BANATSKA ULICA

NOVA ULICA



I-40



KABLAR  
LIFE PARK  
RESA INVEST

## LAMELA BREZA - IV SPRAT

### STAN BR. I-41 - DVOIPOSOBAN STAN

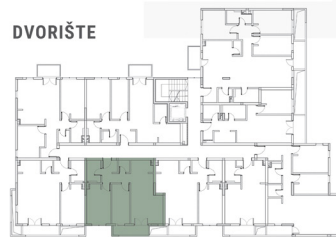
JUGOISTOK **56.24m<sup>2</sup>**

BR.	NAMENA	NETO
01	Ulaz	3.62 m <sup>2</sup>
02	Kuhinja	3.42 m <sup>2</sup>
03	Dnevna soba s trpezarijom	17.53 m <sup>2</sup>
04	Spavaća soba	11.46 m <sup>2</sup>
05	Hodnik	8.79 m <sup>2</sup>
06	Hodnik	2.11 m <sup>2</sup>
07	Kupatilo	3.83 m <sup>2</sup>
08	Ostava	1.68 m <sup>2</sup>
09	Terasa	3.80 m <sup>2</sup>

**UKUPNO STAN br. I - 41** **56.24 m<sup>2</sup>**

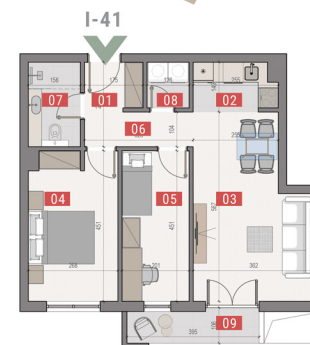


DVORIŠTE



BANATSKA ULICA

NOVA ULICA





KABLAR  
LIFE PARK  
RESA INVEST

## LAMELA BREZA - IV SPRAT

### STAN BR. I-42 - DVOSOBNI STAN

JUGOISTOK 54.30m<sup>2</sup>



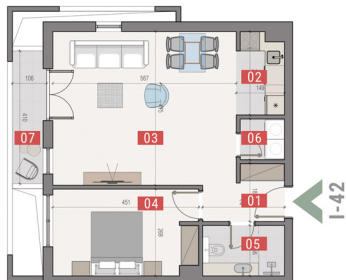
BR.	NAMENA	NETO
01	Ulaz	3.65 m <sup>2</sup>
02	Kuhinja	3.47 m <sup>2</sup>
03	Dnevna soba s trpezarijom	26.27 m <sup>2</sup>
04	Spavaća soba	11.46 m <sup>2</sup>
05	Kupatilo	3.83 m <sup>2</sup>
06	Ostava	1.68 m <sup>2</sup>
07	Terasa	3.95 m <sup>2</sup>
<b>UKUPNO STAN br. I - 42</b>		<b>54.30 m<sup>2</sup></b>

DVORIŠTE



BANATSKA ULICA

NOVA ULICA



I-42



KABLAR  
LIFE PARK  
RESA INVEST

## LAMELA BREZA - IV SPRAT

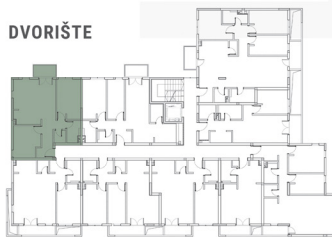
### STAN BR. I-43 - TROSOBNI STAN

SEVEROZAPAD 60.02m<sup>2</sup>



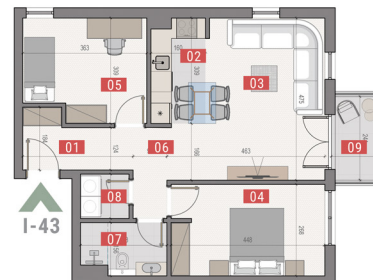
BR.	NAMENA	NETO
01	Ulaz	2.97 m <sup>2</sup>
02	Kuhinja	4.61 m <sup>2</sup>
03	Dnevna soba s trpezarijom	17.82 m <sup>2</sup>
04	Spavaća soba	11.64 m <sup>2</sup>
05	Spavaća soba	10.15 m <sup>2</sup>
06	Hodnik	4.33 m <sup>2</sup>
07	Kupatilo	3.58 m <sup>2</sup>
08	Ostava	1.79 m <sup>2</sup>
09	Terasa	3.14 m <sup>2</sup>
<b>UKUPNO STAN br. I - 43</b>		<b>60.02 m<sup>2</sup></b>

DVORIŠTE



BANATSKA ULICA

NOVA ULICA



I-43



KABLAR  
LIFE PARK  
RESA INVEST

## LAMELA BREZA - IV SPRAT

### STAN BR. I-44 - TROSOBNI STAN

SEVEROZAPAD 61.55m<sup>2</sup>

BR.	NAMENA	NETO
01	Ulaz	2.75 m <sup>2</sup>
02	Kuhinja	5.29 m <sup>2</sup>
03	Dnevna soba s trpezarijom	18.32 m <sup>2</sup>
04	Spavaća soba	11.64 m <sup>2</sup>
05	Spavaća soba	8.34 m <sup>2</sup>
06	Hodnik	3.18 m <sup>2</sup>
07	Kupatilo	3.58 m <sup>2</sup>
08	Toalet	2.40 m <sup>2</sup>
09	Ostava	2.91 m <sup>2</sup>
10	Terasa	3.14 m <sup>2</sup>

UKUPNO STAN br. I - 44 **61.55 m<sup>2</sup>**

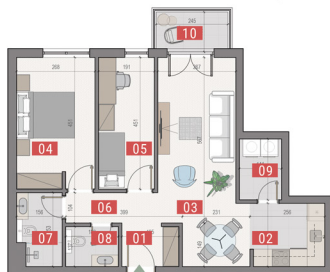


DVORIŠTE



BANATSKA ULICA

NOVA ULICA



I-44





KABLAR  
LIFE PARK  
RESA INVEST

BREZA

## POVUČENI SPRAT

STAN BR. I-45  68.84m<sup>2</sup>

STAN BR. I-46  89.54m<sup>2</sup>

STAN BR. I-47  78.52m<sup>2</sup>

STAN BR. I-48  53.12m<sup>2</sup>

STAN BR. I-49  57.77m<sup>2</sup>





KABLAR  
LIFE PARK  
RESA INVEST

## LAMELA BREZA - **POVUČENI SPRAT**

### STAN BR. I-45 - TROSOBNI STAN



**68.84m<sup>2</sup>**

BR.	NAMENA	NETO
01	Ulaz	5.45 m <sup>2</sup>
02	Kuhinja	6.42 m <sup>2</sup>
03	Dnevna soba s trpezarijom	18.89 m <sup>2</sup>
04	Spavaća soba	12.30 m <sup>2</sup>
05	Spavaća soba	8.41 m <sup>2</sup>
06	Hodnik	3.04 m <sup>2</sup>
07	Kupatilo	4.36 m <sup>2</sup>
08	Toalet	2.27 m <sup>2</sup>
09	Ostava	1.57 m <sup>2</sup>
10	Terasa	6.14 m <sup>2</sup>

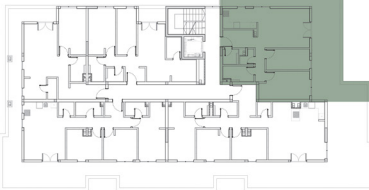
**UKUPNO STAN br. I - 45 68.84 m<sup>2</sup>**



I-45



DVORIŠTE



BANATSKA ULICA

NOVA ULICA



KABLAR  
LIFE PARK  
RESA INVEST

## LAMELA BREZA - **POVUČENI SPRAT**

### STAN BR. I-46 - ČETVOROSOBNI STAN



**89.54m<sup>2</sup>**

BR.	NAMENA	NETO
01	Ulaz	6.12 m <sup>2</sup>
02	Kuhinja	5.24 m <sup>2</sup>
03	Dnevna soba s trpezarijom	23.97 m <sup>2</sup>
04	Spavaća soba	13.48 m <sup>2</sup>
05	Spavaća soba	9.51 m <sup>2</sup>
06	Spavaća soba	9.47 m <sup>2</sup>
07	Hodnik	6.23 m <sup>2</sup>
08	Kupatilo	3.11 m <sup>2</sup>
09	Kupatilo	3.11 m <sup>2</sup>
10	Ostava	1.78 m <sup>2</sup>
11	Terasa	7.52 m <sup>2</sup>

**UKUPNO STAN br. I - 46 89.54 m<sup>2</sup>**

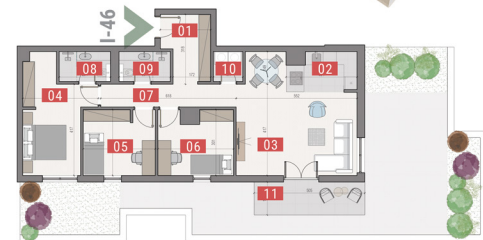


DVORIŠTE



BANATSKA ULICA

NOVA ULICA





KABLAR  
LIFE PARK  
RESA INVEST

## LAMELA BREZA - **POVUČENI SPRAT**

### STAN BR. I-47 - ČETVOROSOBNI STAN

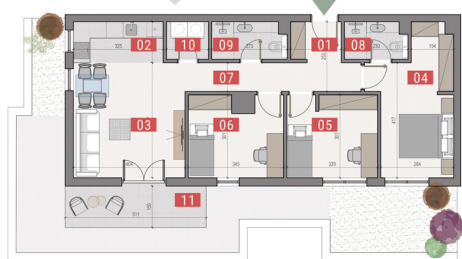
**JUGOISTOK** **78.52m<sup>2</sup>**

BR.	NAMENA	NETO
01	Ulaz	2.59 m <sup>2</sup>
02	Kuhinja	4.69 m <sup>2</sup>
03	Dnevna soba s trpezarijom	16.49 m <sup>2</sup>
04	Spavaća soba	13.29 m <sup>2</sup>
05	Spavaća soba	9.51 m <sup>2</sup>
06	Spavaća soba	9.51 m <sup>2</sup>
07	Hodnik	6.43 m <sup>2</sup>
08	Kupatilo	2.91 m <sup>2</sup>
09	Kupatilo	3.48 m <sup>2</sup>
10	Ostava	2.02 m <sup>2</sup>
11	Terasa	7.60 m <sup>2</sup>

**UKUPNO STAN br. I - 47** **78.52 m<sup>2</sup>**



I-47



NOVA ULICA

DVORIŠTE



BANATSKA ULICA



KABLAR  
LIFE PARK  
RESA INVEST

## LAMELA BREZA - **POVUČENI SPRAT**

### STAN BR. I-48 - DVOSOBNI STAN

**SEVEROZAPAD** **53.12m<sup>2</sup>**

BR.	NAMENA	NETO
01	Ulaz	7.33 m <sup>2</sup>
02	Kuhinja	4.52 m <sup>2</sup>
03	Dnevna soba s trpezarijom	16.52 m <sup>2</sup>
04	Spavaća soba	11.64 m <sup>2</sup>
05	Hodnik	2.25 m <sup>2</sup>
06	Kupatilo	3.58 m <sup>2</sup>
07	Ostava	1.78 m <sup>2</sup>
08	Terasa	5.49 m <sup>2</sup>

**UKUPNO STAN br. I - 48** **53.12 m<sup>2</sup>**

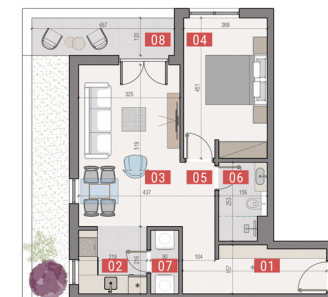


DVORIŠTE



BANATSKA ULICA

NOVA ULICA



I-48



KABLAR  
LIFE PARK  
RESA INVEST

# LAMELA BREZA - POVUČENI SPRAT

## STAN BR. 1-49 - TROSOBNI STAN

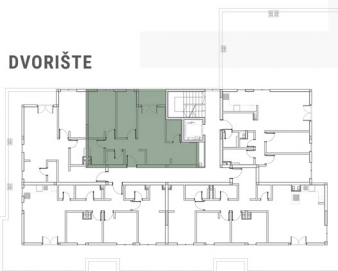
SEVEROZAPAD 57.77m<sup>2</sup>

BR.	NAMENA	NETO
01	Ulaz	2.75 m <sup>2</sup>
02	Kuhinja	5.31 m <sup>2</sup>
03	Dnevna soba s trpezarijom	14.61 m <sup>2</sup>
04	Spavaća soba	11.64 m <sup>2</sup>
05	Spavaća soba	8.34 m <sup>2</sup>
06	Hodnik	3.18 m <sup>2</sup>
07	Kupatilo	3.58 m <sup>2</sup>
08	Toalet	2.34 m <sup>2</sup>
09	Ostava	2.91 m <sup>2</sup>
10	Terasa	3.12 m <sup>2</sup>

UKUPNO STAN br. 1 - 49 **57.77 m<sup>2</sup>**



DVORIŠTE



BANATSKA ULICA

NOVA ULICA



1-49





KABLAR  
LIFE PARK  
**RESA INVEST**

SKLAD  
PRIRODE  
KOMFORA



Za sve informacije  
o projektu “Kablar Life Park”,  
kupovini stanova i mogućnostima  
kreditiranja posetite nas  
u našem prodajnom centru,  
u okviru kompanije  
“Resa Gradnja d.o.o”

**ZEMUNSKA 126, 22303  
NOVI BANOVC  
SERBIA**

**informacije i rezervacije:  
066/220-205  
info@resainvest.rs  
www.resainvest.rs**